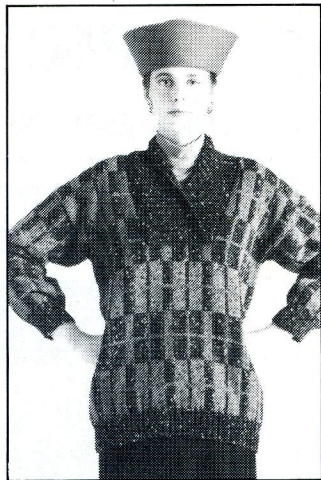


3 PLAID SWEATER WITH SHAWL COLLAR



PATTERN RATING

** Fairly easy, for knitters with some experience.

MACHINES

This pattern is suitable for standard gauge punchcard machines with or without a ribber.

MATERIALS

Sirdar Sovereign Escort Double Knitting.
8 [8, 9, 9, 10, 10] × 50g balls in black with white (MC).
3 [3, 4, 4, 4, 4] × 50g balls in Royal Dragoon (A).
3 [3, 3, 3, 3, 4] × 50g balls in Carolean Consort (B).
2 [2, 3, 3, 3, 4] × 50g balls in Flamenco Fun (C).

Sovereign Escort Double Knitting is 43% Wool, 39% Acrylic, 18% Nylon. If you have difficulty obtaining this yarn and would like a list of your local stockists, please write to Sirdar plc, Flanshaw Lane, Alverthorpe, Wakefield, West Yorkshire WF2 9ND.

SILVER GAUGE READING

Heavy yarn.

MEASUREMENTS

To fit bust 82 [87, 92, 97, 102, 107] cm, 32 [34, 36, 38, 40, 42] in.
Actual size 99 [104, 110, 114, 118, 124] cm, 39 [41, 43¼, 45, 46½, 48¾] in.
Length to shoulder 66 [66, 67, 67, 68, 68] cm, 26 [26, 26½, 26½, 26¾, 26¾] in.
Sleeve seam 38 [42, 44, 44, 46, 46] cm, 15 [16½, 17¼, 17¼, 18, 18] in.

Instructions are written for the smallest size, larger sizes follow in square brackets. If only one figure is given, it applies to all sizes.

TENSION

27 stitches and 32 rows to 10 cm, 4 in measured over Fair Isle pattern (tension dial setting approximately 10).

For perfect results, please check your tension carefully.

ABBREVIATIONS

See page 4.

KNITTING NOTES

We used knit side of knitting as right side of garment.

PATTERN NOTES

Punch card as shown before starting to knit.
Two colour Fair Isle rows should be knitted with first colour given in back feeder 1(A) to knit background and second colour given in front feeder 2(B) to knit contrast pattern.

FAIR ISLE PATTERN BACK AND FRONT

K 16 rows MC/A, 2 rows B only (st st), 16 rows MC/A, 16 rows B/MC, 2 rows C only (st st), 16 rows B/MC, 16 rows MC/C, 2 rows A only (st st), 16 rows MC/C, 16 rows A/MC, 2 rows B only (st st), 16 rows A/MC, 16 rows MC/B, 2 rows C only (st st), 16 rows MC/B, 16 rows C/MC, 2 rows A only (st st) and 4 [4, 8, 8, 10, 10] rows C/MC.

SLEEVES

1ST AND 2ND SIZES

Work as for back and front starting with row 19 [5].

3RD AND 4TH SIZES

K 2 rows MC/A, then work as for back and front.

5TH AND 6TH SIZES

K 8 rows C/MC, then work as for back and front.

BACK

MACHINES WITH RIBBER

With ribber in position and carriage at right, set machine for ▶

2x2 rib. Push 67 [71, 75, 77, 81, 85] Ns at left and right of centre 0 to WP. 134 [142, 150, 154, 162, 170] Ns.

* Push corresponding Ns on ribber to WP. Arrange Ns for 2 x 2 rib. Using MC, cast on. Using MT-7/MT-7, K 3 tubular rows. Carriage is at right. Set machine for 2x2 rib knitting. Set RC at 000. Using MT-6/MT-6, K 1 row. Using MT-5/MT-5, K 1 row. Using MT-4/MT-4, K 1 row. Using MT-3/MT-3, K 1 row. Using MT-2/MT-2, K 19 rows. Transfer sts for st st *.

1ST AND 4TH SIZES

Inc 1 st at each end.

ALL SIZES

136 [142, 150, 156, 162, 170] sts.

MACHINES WITHOUT RIBBER

Push 62 [70, 75, 78, 81, 85] Ns at left and 67 [70, 74, 77, 80, 85] Ns at right of centre 0 to WP. 134 [140, 149, 155, 161, 170] Ns.

* Push every 3rd N back to NWP. Using MT and WY, cast on and K a few rows ending with carriage at right. Set RC at 000. Using MT-2 and MC, K 43 rows. Push Ns from NWP to WP and make a hem by placing loops of first row worked in MC evenly along the row. Unravel WY when work is completed *

1ST AND 2ND SIZES

Inc 1 st at each end.

3RD, 4TH AND 5TH SIZES

Inc 1 st at right edge.

ALL SIZES

136 [142, 150, 156, 162, 170] sts.

ALL MACHINES

Insert punchcard and lock on first row. Set carriage for patt. Set RC at 000. Using MT, K 1 row. Release card and cont in Fair Isle patt. K 121 rows. RC shows 122 and work measures 44 cm, 17 1/4 in. Place marker at each end **. K 61 [61, 65, 65, 67, 67] rows.

SHAPE NECK

Note pattern row on card. Using a length of MC, cast off centre 32 sts. Using nylon cord, K 52 [55, 59, 62, 65, 69] sts at left by hand taking Ns down to NWP. Cont on rem sts for first side. K 1 row. Cast off 3 sts at beg of next and

folll alt row, K 1 row. Dec 1 st at beg of next and foll 2 alt rows. Using WY, K a few rows in st st over rem 43 [46, 50, 53, 56, 60] sts and release from machine. With carriage at right, unravel nylon cord over rem Ns, bringing Ns back to WP. Lock card on number previously noted. Take carriage to left without knitting. Release card and cont in Fair Isle patt. Finish to correspond with first side, reversing shapings.

FRONT

Work as for back to **.

K 1 [1, 5, 5, 7, 7] rows.

SHAPE NECK

Note pattern row on card. Using a length of MC, cast off centre 32 sts. Using nylon cord, K 52 [55, 59, 62, 65, 69] sts at left by hand taking Ns down to NWP. Cont on rem sts for first side. K 7 rows. Dec 1 st at neck edge on next and every foll 7th row until 43 [46, 50, 53, 56, 60] sts rem. K 6 rows. Using WY, K a few rows in st st and release from machine. With carriage at right, unravel nylon cord over rem Ns, bringing Ns back to WP. Lock card on number previously noted. Take carriage to left without knitting. Release card and cont in Fair Isle patt. Finish to correspond with first side reversing shapings.

SLEEVES

MACHINES WITH RIBBER

With ribber in position and carriage at right, set machine for 2x2 rib. Push 41 [41, 43, 43, 45, 45] Ns at left and right of centre 0 to WP. 82 [82, 86, 86, 90, 90] Ns. Work as for back from * to *.

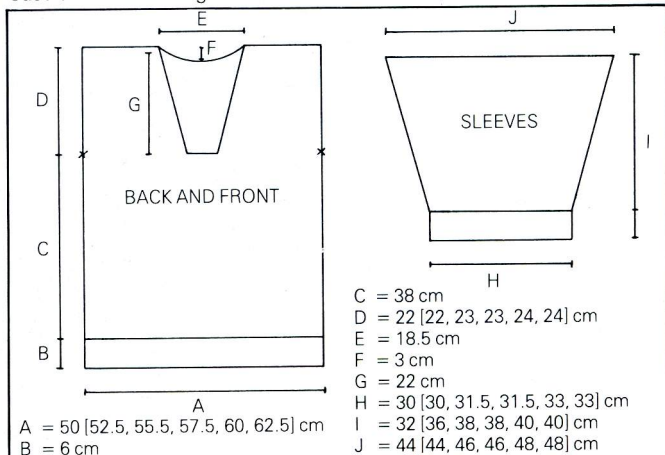
MACHINES WITHOUT RIBBER

Push 40 [40, 43, 43, 45, 45] Ns at left and 40 [40, 43, 43, 44, 44] Ns at right of centre 0 to WP. 80 [80, 86, 86, 89, 89] Ns. Work as for back from * to *.

1ST AND 2ND SIZES

Inc 1 st at each end.

5TH AND 6TH SIZES



Inc 1 st at right edge.
ALL SIZES
82 [82, 86, 86, 90, 90] sts.

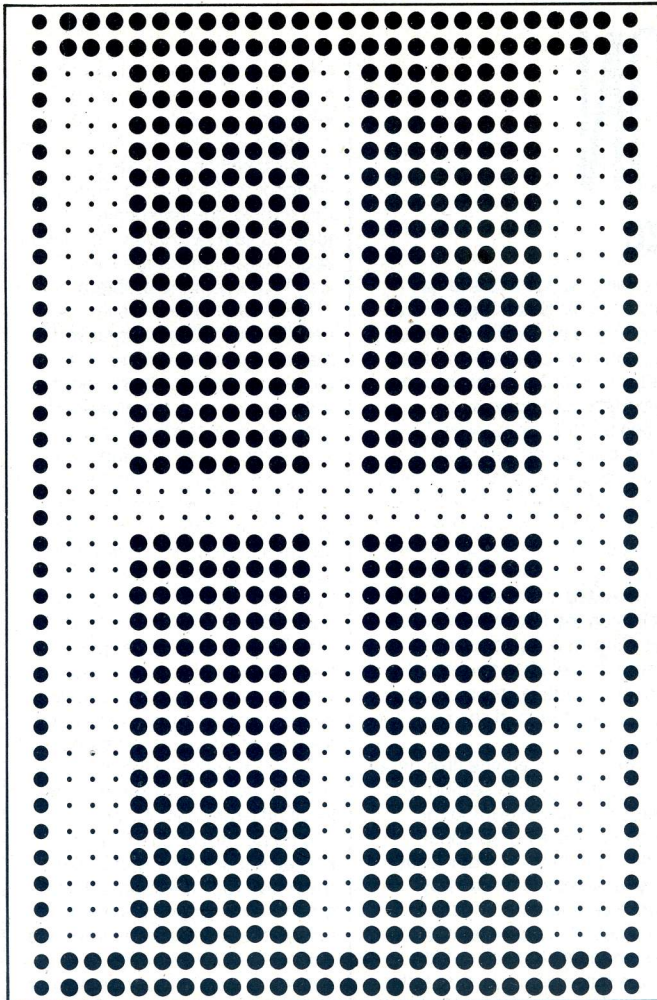
ALL MACHINES

Insert punchcard and lock on 19th, [5th, 33rd, 33rd, 27th, 27th] row. Set carriage for patt. Set RC at 000. Using MT, K 1 row. Release card and cont in Fair Isle patt. Shape sides by inc 1st at each end of the next and every foll 5th, [6th, 6th, 6th, 6th, 6th] row until there are 120 [120, 126, 126, 130, 130] sts. K 11 [7, 7, 7, 13, 13] rows. RC shows 103 [117, 123, 123, 129, 129] and work measures 38 [42, 44, 44, 46, 46] cm, 15 [16½, 17¼, 17¼, 18¼, 18¼] in. Cast off.

COLLAR

MACHINES WITH RIBBER

With ribber in position and carriage at right, set machine for 2×2 rib. Push 174 Ns on each bed to WP. Arrange Ns for 2×2 rib. Using MC, cast on. Using MT-7/MT-7, K 3 tubular rows. Carriage is at right. Set RC at 000. Using MT-6/MT-6, K 1 row. Using MT-5/MT-5, K 1 row. Using MT-4/MT-4, K 1 row. Using MT-3/MT-3, K 1 row.



Using MT-2/MT-2, K 44 rows. Transfer sts for st st. Using MT-1, K 2 rows. Using WY, K a few rows and release from machine.

MACHINES WITHOUT RIBBER

Push 176 Ns to WP. Push every 3rd N back to NWP. Using MT and WY, cast on and K a few rows ending with carriage at left. Set RC at 000. Using MT-2 and MC, K 85 rows. Push Ns from NWP to WP and make a hem by placing loops of first row worked in MC evenly along the row. Unravel WY when work is completed. Using MT, K 2 rows. Using WY, K a few rows and release from machine.

PRESSING

With wrong side facing, pin out all pieces to measurements given. Press carefully following instructions on ball band.

MAKING UP

Graft shoulder seams. Pin collar into position. Unravelling WY as required, backstitch through open loops of last row worked in MC. Overlap ends and catch down. Set in sleeves between markers. Join side and sleeve seams.